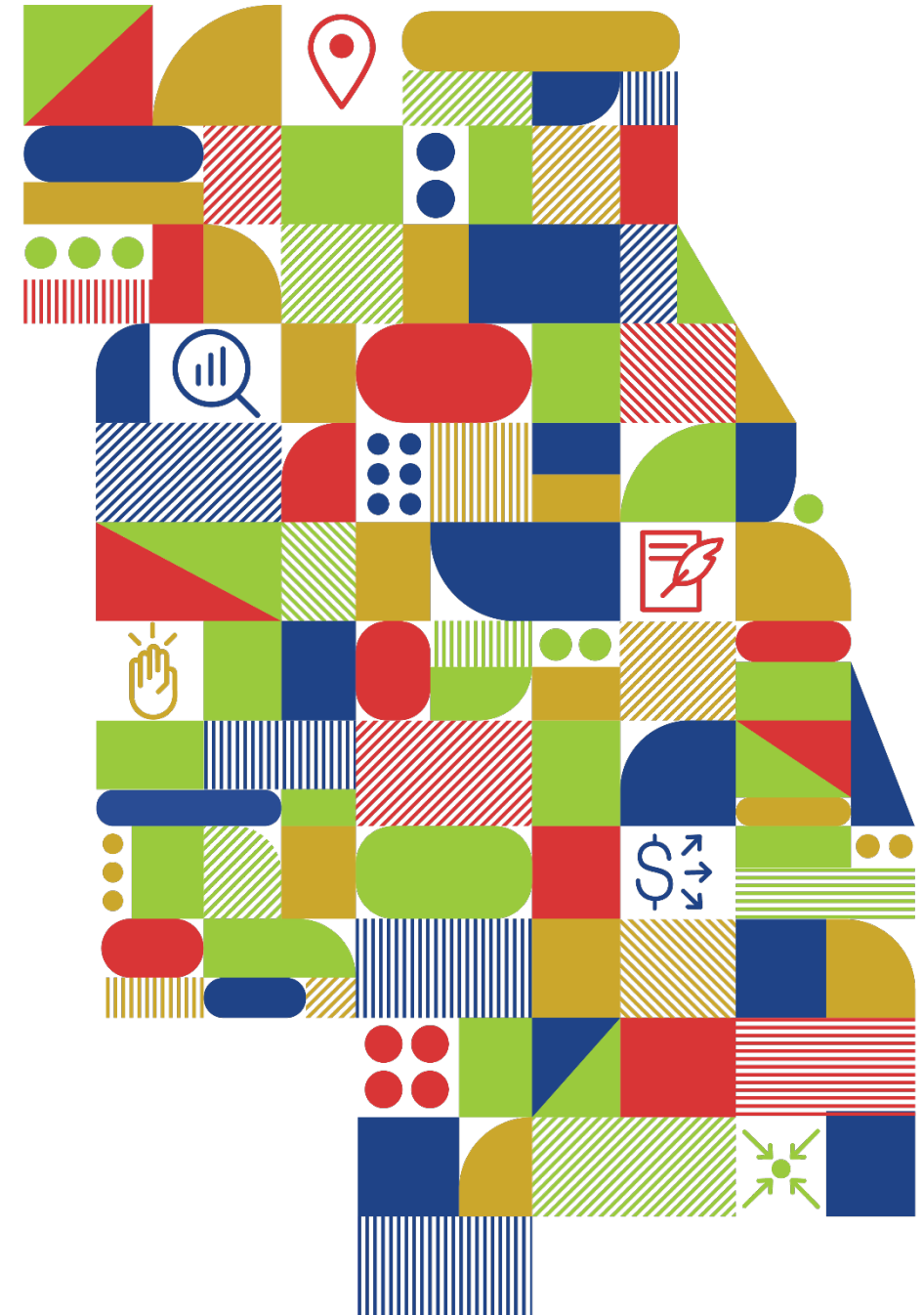


Strategic direction and CMAP committees FY2022-FY2027



Our core values

- Serve with passion
- Pursue equity
- Foster collaboration
- Lead with excellence
- Drive innovation



A black and white photograph of three young people standing against a white background. On the left is a young Black woman with her hair in braids, wearing a dark hoodie with her arms crossed. In the center is a young man with a beard and long hair, wearing a dark button-down shirt. On the right is a young man with glasses, wearing a dark sweater with a light-colored argyle pattern over a white collared shirt and a dark tie. To the right of the group is large, bold text.

Vision: An inclusive and thriving region

James Isaac Paschky
Port Barrington (McHenry)
Jeromel DelaRosa Lara
Bloomington (DuPage County)
J'Khayla Johnson
Chicago



Theory of change
for implementing
ON TO 2050

A framework to leverage CMAP's capabilities needs a structure to advance ON TO 2050 goals

Vision

An inclusive and thriving region

Mission

To serve the people of the region by driving innovation, fostering shared action, and advancing toward a common vision.

Goals

A transportation system that works better for everyone

A robust and inclusive regional economy

A region that takes action to mitigate and adapt to the impacts of climate change and preserve high-quality water resources

Objectives

Objective

Objective

Objective

Objective

Objective

Objective

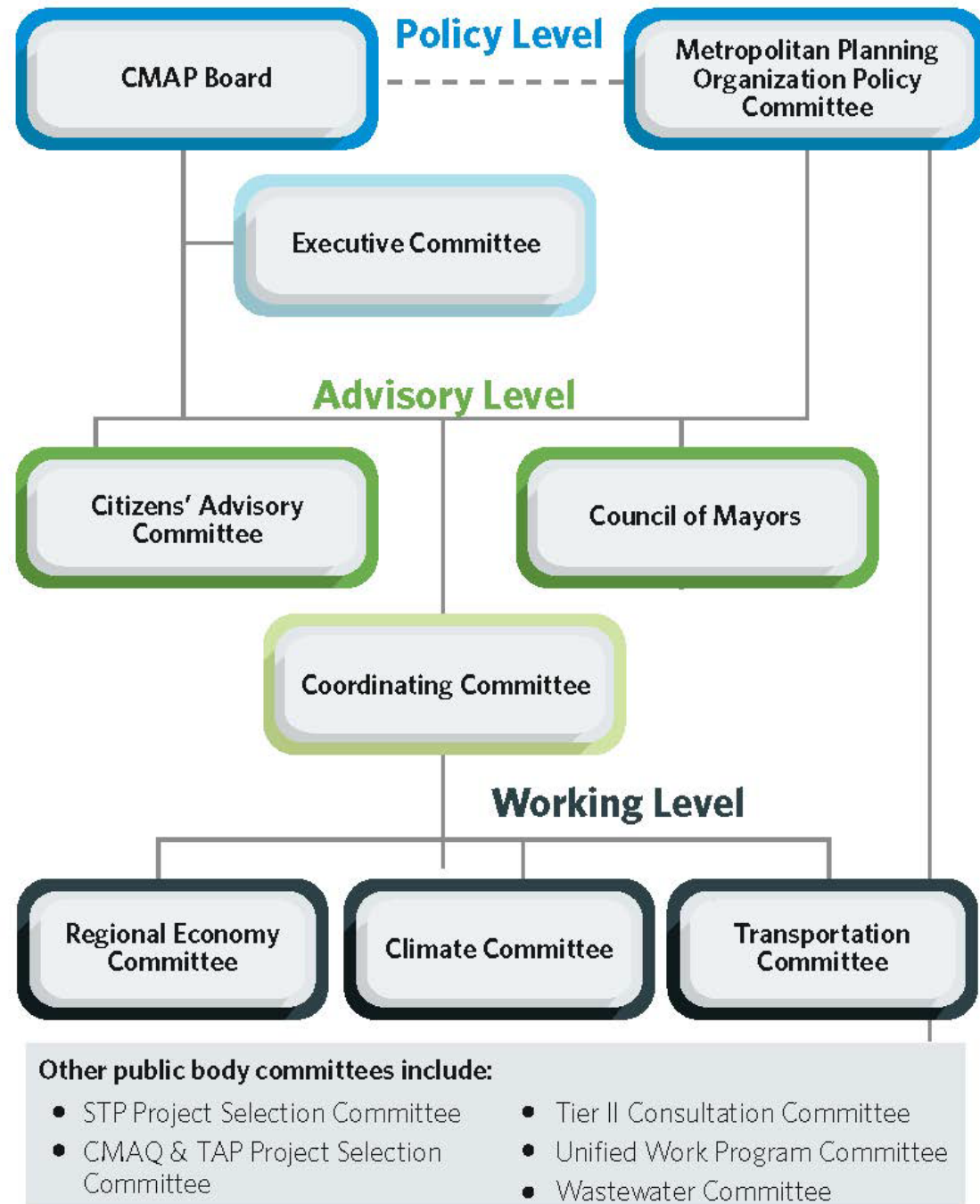
Objective

Objective

Objective

A diversified funding source available to support implementation of ON TO 2050

Strategic direction and CMAP committees



Transportation goal: A transportation system that works better for everyone


Objectives:

Strategic funding investments
systematized

Transportation system efficiently
maintained and modernized

Travel safety improved





Regional economy goal: A robust and inclusive regional economy

Objectives:

Inclusive growth

Increased access to economic opportunities

Climate goal: A region that takes action to mitigate and adapt to the effects of climate change and preserves high-quality water resources

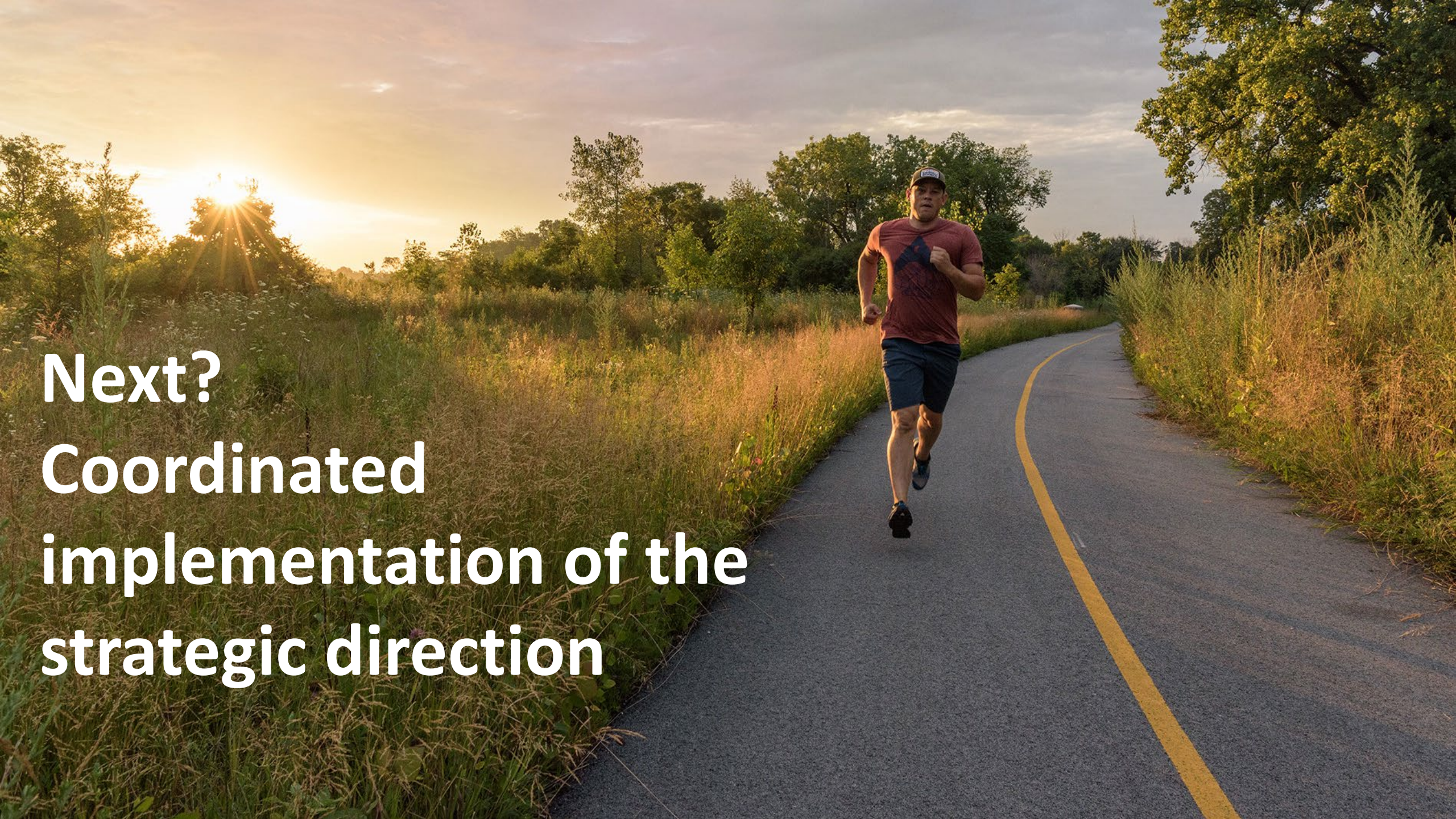
Objectives:

Greenhouse gases from transportation reduced

Network more resilient against flooding and extreme weather

Water resources protected and sustainably managed





**Next?
Coordinated
implementation of the
strategic direction**